

Analyzed : 7/13/2025 9:20:01 AM  
 Sample Type : Essential Oil

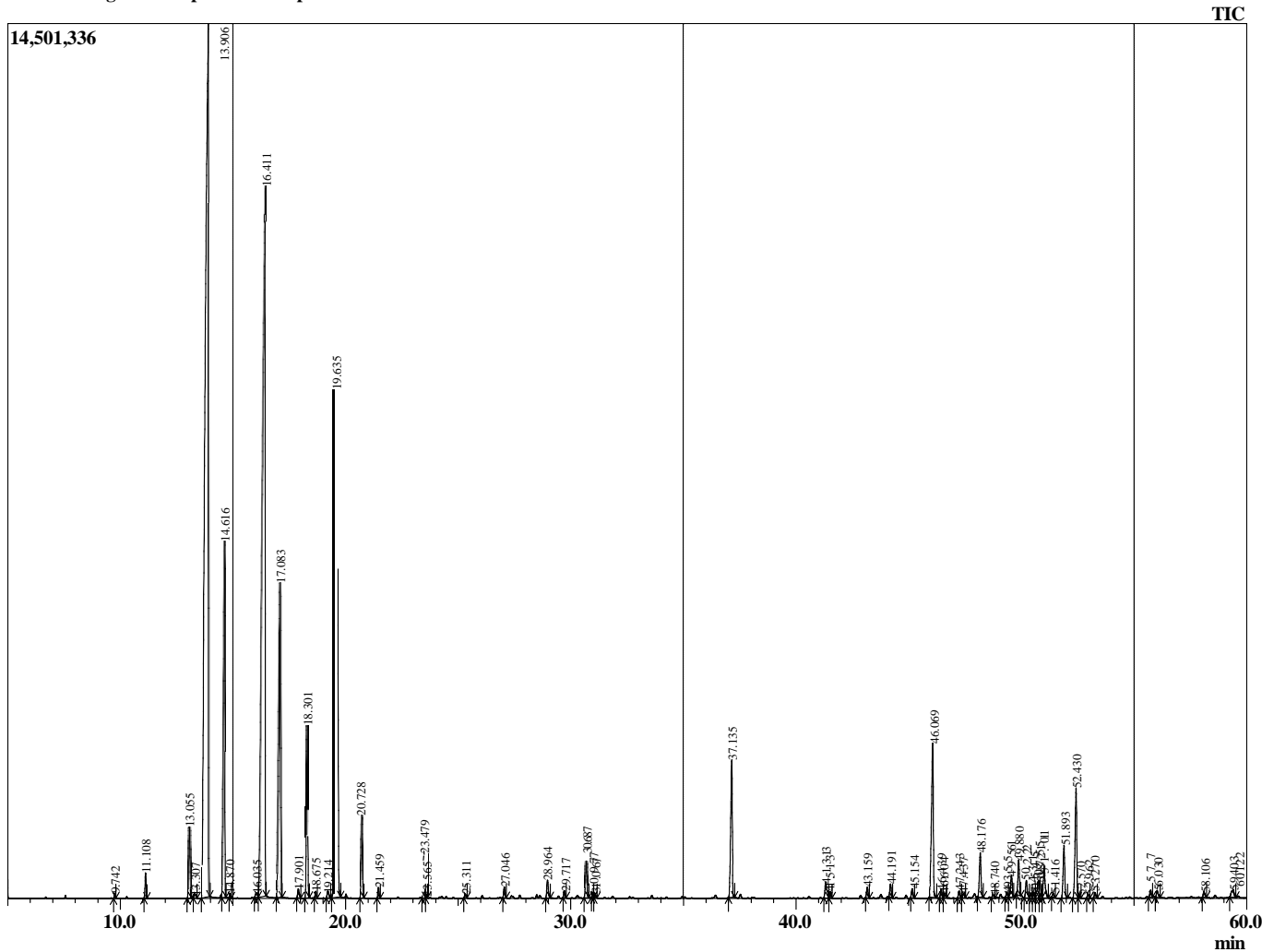
**BIORUŽA, s. r. o.**  
 Laborecká 1, 010 01 Žilina, IČO: 52234070, IČ DPH: SK2120953802, tel. :  
 00421 905 864 140, [info@bioruzka.sk](mailto:info@bioruzka.sk)

Peak Report TIC  
 R.Time Name Area%  
 9.742 Hexenol <3-Z> [RT 16.315 AI-3:850, AI-4:87 0.044  
 11.108 Santene (Rt 18.186 AI884 ) 0.261

Sample Name : Juniper Beri sample  
 Sample ID : 4184  
 Injection Volume : 1.00

13.055	Tricyclene [Rt 21.24 AI921 ]	1.023
13.307	Thujene <alpha->	0.080
13.906	2-Pinene	31.407
14.616	Camphene [RT 23.475, AI 954]	4.954
14.870	verbenene	0.042
16.035	Sabinene	0.113
16.411	Pinene <beta->	23.198
17.083	Myrcene	5.125
17.901	Phellandrene <alpha->	0.138
18.301	3-Carene	2.282
18.675	Terpinene <alpha->[RT 28.853, AI 1017]	0.080
19.214	Cymene <para->	0.120
19.635	Limonene	14.099
20.728	Ocimene <E-beta> [RT31.251, RI1044]	1.052
21.459	Terpinene <gamma>	0.131
23.479	Terpinolene	0.647
23.565	Dehydro-p-cymene[RT34.771, AI1086]	0.034
25.311	Fenchol <endo> [RT37.078, AI1114]	0.052
27.046	Pinocarveol <trans> [RT38.806, AI1135]	0.150
28.964	Borneol	0.283
29.717	Terpinen-4-ol [RT41.860, AI1177]	0.097
30.687	Terpineol <beta>	0.547
30.977	(1R)-(-)-Myrtenal	0.066
31.067	Myrtenol [RT43.11, AI1194]	0.062
37.135	2-Norbomanol, 1,3,3-trimethyl-, acetate, endo	2.208
41.313	Terpinyl acetate <alpha>	0.339
41.513	Longipinene<alpha>[RT54.586, AI1350]	0.103
43.159	Copaene <alpha> [RT 56.323, AI1376]	0.156
44.191	Elemene <beta>	0.193
45.154	Junipene[RT58.781, AI1408]	0.140
46.069	Caryophyllene	2.758
46.439	Himachala-2,4-diene	0.127
46.604	1H-Cyclopenta[1,3]cyclopropa[1,2]benzene, 2	0.070
47.243	Alloaromadendrene	0.106
47.437	Guanidiene <6,9> [RT60.788, AI1442]	0.068
48.176	Humulene <alpha> [RT 61.826, RI 1452]	0.749
48.740	Cadina-1(6),4-diene <cis>[RT62.224, AI1461]	0.055
49.355	Murrola-4(14),5-diene <cis> [RT63.011 AI14	0.084
49.561	Cadinene <gamma> [RT65.496, AI1513]	0.391
49.880	Germacrene D	0.546
50.222	Selinene <beta> [RT64.023 AI1490]	0.318
50.431	Naphthalene, 1,2,4a,5,8,8a-hexahydro-4,7-dim	0.080
50.545	Cadina-1(6),4-diene <cis>[RT62.224, AI1461]	0.103
50.755	2-Isopropenyl-4a,8-dimethyl-1,2,3,4,4a,5,6,7-	0.359
50.821	Bicycloelemene	0.254
51.011	Muurolene <alpha>[RT 64.557, AI1500]	0.620
51.416	Cadinene <delta> [RT65.784, AI1523]	0.063
51.893	Cadinene <gamma>	0.882
52.430	Cadinene <delta>	1.941
52.570	Zonarene[RT66.097, AI1529]	0.052
52.962	Cadine-1,4-diene <trans>[RT66.701, AI1533]	0.052
53.270	Naphthalene, 1,2,4a,5,6,8a-hexahydro-4,7-dim	0.083
55.737	1,1,7-TRIMETHYL-4-METHYLENEDECAH	0.114
56.030	Caryophyllene oxide	0.125
58.106	Selina-6-en-4-ol	0.097
59.403	Cadinol <alpha>[RT74.309, AI1652]	0.210
60.122	Cadinol <alpha>[RT74.309, AI1652]	0.148
75.857	1,2-Benzenedicarboxylic acid, bis(2-methoxye	0.318
		100.000

Chromatogram Juniper Beri sample of BIORUŽA s.r.o.



Comments:

Typical Ranges of Main Components: