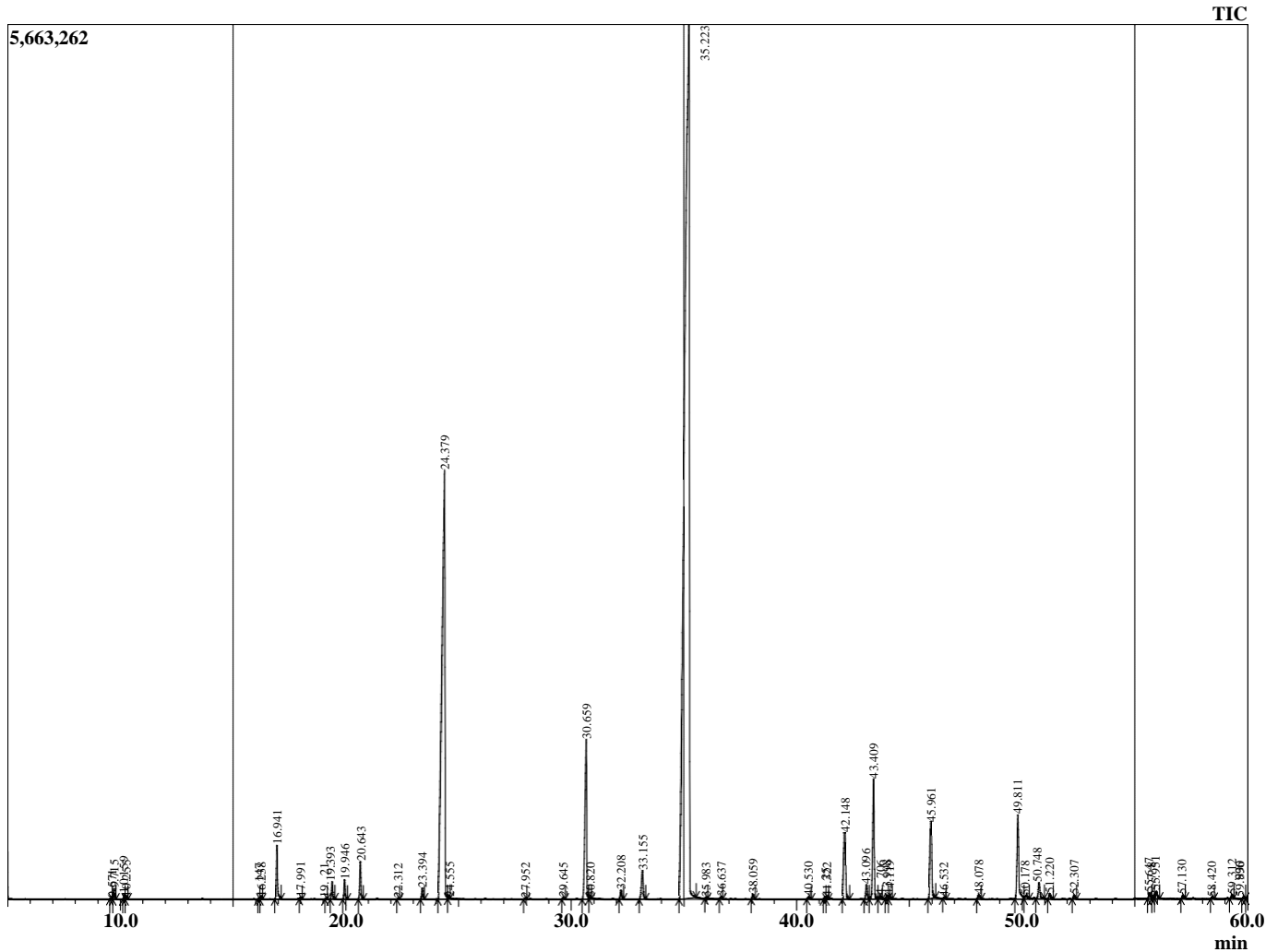


**Sample information**

**Sample Type : Essential Oil**

**Injection Volume : 1.00**

R.Time	Name	Peak Report TIC	Area%
9.571	2-Hexenal		0.016
9.715	Hexenol <3Z>	[RT16.330, AI850]	0.144



10.159	2-Hexen-1-ol, (E)-		0.064
10.255	Hexanol <n>	[RT 17.38, AI863]	0.034
16.147	Pinene <beta>	[RT 25.727, AI 979]	0.019
16.238	1-Octen-3-ol		0.027
16.941	Myrcene		1.064
17.991	HERBOXIDE SECOND ISOMER		0.037
19.121	Cymene <para>		0.018
19.393	Limonene	[RT 30.079, AI 1029]	0.332
19.946	Ocimene <Z-beta>		0.376
20.643	Ocimene <E-beta>	[RT31.251, RI1044]	0.732
22.312	Linalool oxide <cis-furanoid>		0.020
23.394	Terpinolene		0.220
24.379	Linalool	[RT 35.67, AI 1096]	18.766
24.555	1,5,7-Octatrien-3-ol, 3,7-dimethyl-		0.038
27.952	2H-Pyran, 3,6-dihydro-4-methyl-2-(2-methyl-		0.027
29.645	Terpinen-4-ol		0.043
30.659	Terpineol <alpha>		4.284
30.820	Methyl salicylate	[RT43.475, AI1190]	0.022
32.208	Linalyl acetate		0.195
33.155	Nerol	[RT45.229, AI1227]	0.764
35.223	Linalyl acetate		60.398
35.983	Geranial	[RT 48.526, AI 1267]	0.026
36.637	Geranyl formate	[RT50.634, AI1298]	0.046
38.059	Geraniol	[RT47.152, AI1250]	0.108
40.530	7-Oxabicy-4-(1-methylethenyl)-		0.071
41.252	Terpinyl acetate <alpha>		0.050
41.322	UJuniper@76.720		0.033
42.148	Neryl acetate		1.506
43.096	Copaene <alpha>	[RT 56.323, AI1376]	0.353
43.409	Geranyl acetate		2.833
43.706	.BETA. BOURBONENE		0.090
43.998	Cadina-1(6),4-diene <cis>	[RT62.224 ,AI1461]	0.085
44.119	Elemene <beta>		0.080
45.961	Caryophyllene		1.903
46.532	Copaene <beta>	[RT60.075, AI1430]	0.028
48.078	Humulene <alpha>		0.124
49.811	Germacrene D		2.317
50.178	Eremophila-1(10),11-diene		0.116
50.748	Bicyclogermacrene		0.423
51.220	Farnesene <alpha>	[RT 64.744, AI 1505]	0.132
52.307	Cadinene <delta>	[RT65.784, AI1523]	0.098
55.647	Spathulenol		0.149
55.798	Caryophyllene oxide		0.040
55.951	Humulene epoxide II	[RT71.580, AI1608]	0.200
57.130	Himachelene <gamma>	[RT63.606 , AI1482]	0.083
58.420	1,3-Bis-(2-cyclopropyl,2-methylcyclopropyl)-		0.046
59.312	Cyclohexene, 2-ethenyl-1,3,3-trimethyl-		0.092
59.830	2-Naphthalenemethanol, decahydro-.alpha.,al		0.061
59.996	Cubanol	[RT 74.322, AI 1641]	0.048
72.177	5-Octen-2-one, 6-methyl-8-(2,6,6-trimethyl-1-		0.182
73.758	geranyl-.alpha.-terpinene		0.024
73.949	UBlue Tansy@91.906		0.028
74.839	Retinol		0.049
75.345	UBlue Tansy@91.906		0.024
75.466	geranyl-p-cymene		0.041
75.758	1,2-Benzenedicarboxylic acid, butyl octyl este		0.027
80.509	Manool	[RT93.080, AI2056]	0.044
87.878	Sclareol		0.799
			100.000

Comments:

Typical Ranges of Main Components: