

BIORUŽA, s. r. o.

Laborecká 1, 010 01 Žilina, IČO: 52234070, IČ DPH: SK2120953802, tel. : 00421 905 864 140, info@bioruza.sk

CERTIFICATE of ANALYSIS (COA)

COMMON NAME	Rosalina
LATIN NAME	<i>Melaleuca ericifolia</i>
COUNTRY OF ORIGIN	Australia
CULTIVATION METHOD	Conventional
TYPE	Essential Oil
EXTRACTION METHOD	Steam Distilled
PLANT PART	Leaves & Branches
USE	Aromatherapy, Natural Perfumery

LOT #	15
MANUFACTURING DATE	January 2026
BEST BY DATE	January 2029

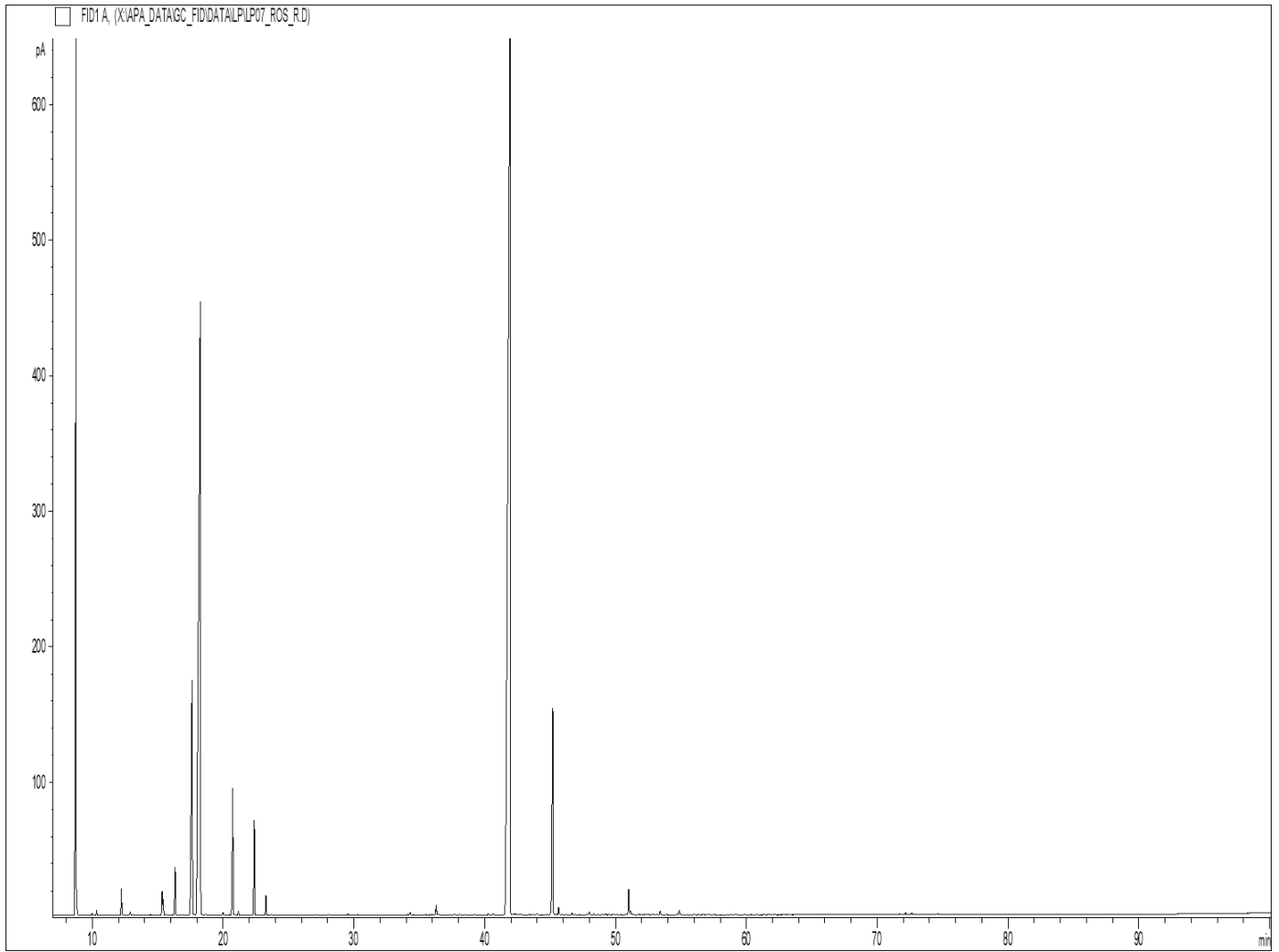
	SPECIFICATIONS (Range)	
SPECIFIC GRAVITY @20°C	0.870 - 0.900	0.8948
REFRACTIVE INDEX @20°C	1.445 – 1.502	1.4646
OPTICAL ROTATION @20°C	+4° to +8°	+0.6

PHYSICAL APPEARANCE	Transparent liquid	<i>Conforms</i>
COLOR	Colorless to pale yellow	<i>Conforms</i>
ODOR	Soft, rosy, camphoraceous with pine-like top notes.	<i>Conforms</i>
SOLUBILITY	Soluble in alcohol and fixed oils	
SPECIAL USE INSTRUCTIONS	Dilute before use	

PRIMARY CONSTITUENTS	Linalool, 1.8-Cineole.
----------------------	------------------------

COMMENTS	Odor quality is excellent
----------	---------------------------

CHROMATOGRAPHIC PROFILE :



- ROSALINA EO - SKU 843 LOT 15 -

Peaks	RT (min)	Compound name	%	Standard (%)	Allergens (%)
1	8.76	alpha-PINENE	13.44		13.44
2	8.82	alpha-THUYENE	0.18		
3	9.98	alpha-FENCHENE	0.02		
4	10.33	CAMPHENE	0.05		
5	12.22	beta-PINENE	0.35		0.35
6	12.90	SABINENE	0.04		
7	15.34	beta-MYRCENE	0.38		
8	15.42	alpha-PHELLANDRENE	0.21		
9	16.33	alpha-TERPINENE	0.77		0.77
10	17.63	LIMONENE	5.99		5.99
11	18.26	1,8-CINEOLE	22.43		
12		beta-PHELLANDRENE			
13	20.02	cis-beta-OCIMENE	0.04		
14	20.75	gamma-TERPINENE	2.19		
15	20.90	MENTHATRIENE ISOMER	0.01		
16	21.17	trans-beta-OCIMENE	0.06		
17	22.39	p-CYMENE	1.57		
18	23.28	TERPINOLENE	0.32		0.32
19	29.55	alpha-PINENE OXIDE	0.03		
20	30.24	3-HEXEN-1-OL	0.01		
21	34.14	alpha,p-DIMETHYLSTYRENE	0.01		
22	34.30	LINALOOL cis-OXIDE	0.05		
23	35.92	trans-THUYANOL	0.01		
24	36.29	LINALOOL trans-OXIDE	0.16		
25	36.48	NERYL OXIDE	0.02		
26	37.70	alpha-CAMPHOLENAL	0.01		
27	38.10	SESQUITERPENE	0.01		
28	39.24	CAMPHOR	0.01		0.01
29	40.28	PLINOL ISOMER	0.02		
30	40.65	SESQUITERPENE	0.03		
31	41.96	LINALOOL	45.83		45.83
32	42.31	1-OCTANOL	0.03		
33	42.70	trans-p-MENTH-2-EN-1-OL	0.03		
34	43.65	ALIPHATIC ESTER	0.02		
35	43.99	FENCHOL	0.03		
36	45.20	beta-CARYOPHYLLENE	0.05		0.05
37	45.21	TERPINENE-4-OL	4.21		
38	45.44	SESQUITERPENE	0.02		
39	45.66	AROMADENDRENE	0.13		
40	46.22	COPACAMPHENE	0.01		
41	46.68	cis-p-MENTH-2-EN-1-OL	0.03		
42	48.01	ALLO-AROMADENDRENE	0.06		
43	48.36	trans-PINOCARVEOL	0.02		

- ROSALINA EO - SKU 843 LOT 15 -

Peaks	RT (min)	Compound name	%	Standard (%)	Allergens (%)
44	48.98	ZONARENE	0.01		
45	49.23	CRYPTONE	0.02		
46	49.48	SESQUITERPENE	0.01		
47	49.79	trans-VERBENOL	0.01		
48	50.40	SESQUITERPENE	0.01		
49	51.02	alpha-TERPINEOL	0.45		0.45
50	51.17	LEDENE	0.08		
51	52.53	SESQUITERPENE	0.02		
52	52.86	alpha-SELINENE	0.01		
53	52.93	alpha-MUUROLENE	0.01		
54	53.19	CARVONE	0.01		0.01
55	53.43	BICYCLOGERMACRENE	0.07		
56	53.93	trans-PIPERITOL	0.01		
57	54.89	delta-CADINENE	0.10		
58		gamma-CADINENE			
59	56.34	CADINA-1,4-DIENE	0.01		
60	57.05	ALIPHATIC ESTER	0.02		
61	59.24	CALAMENENE	0.01		
62	59.87	GERANIOL	0.02		0.02
63		p-CYMENE-8-OL			
64	65.09	3,7-OCTADIENE-2,6-DIOL, 2,6-DIMETHYL-	0.01		
65	69.02	Epi-GLOBULOL	0.01		
66	71.15	GLEENOL	0.01		
67	71.72	CUBENOL	0.02		
68	72.18	GLOBULOL	0.04		
69	72.65	VIRIDIFLOROL	0.03		
70	74.25	ROSIFOLIOL	0.02		
71	74.62	SPATHULENOL	0.03		
72	76.68	SESQUITERPENOL	0.01		
		TOTAL	100.00		67.24