

Analyzed :2/1/202611:17:26PM  
 Sample Type :EssentialOil

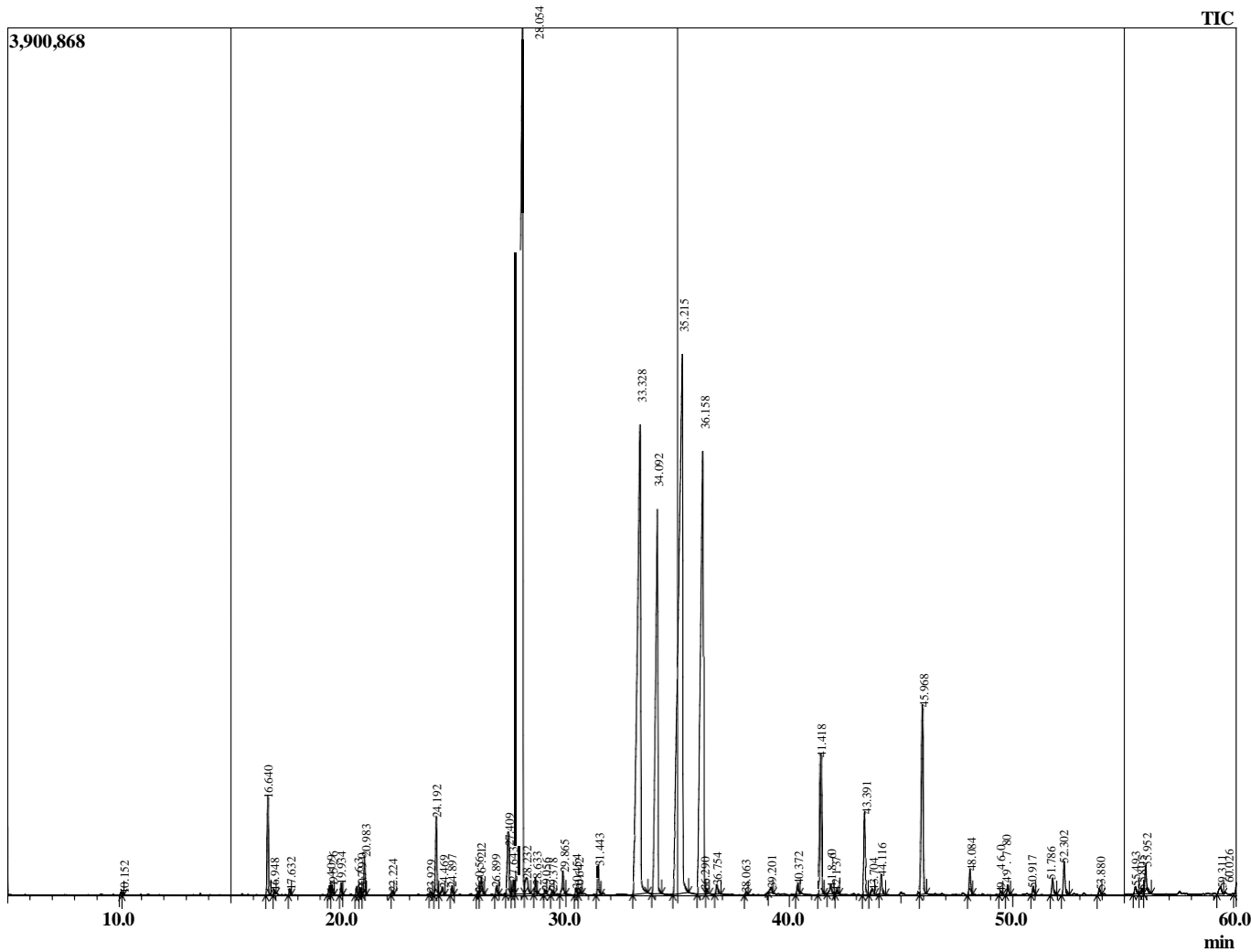
**BIORUŽA, s. r. o.**  
 Laborecká 1, 010 01 Žilina, IČO: 52234070, IČ DPH: SK2120953802, tel. :  
 00421 905 864 140, [info@bioruza.sk](mailto:info@bioruza.sk)

Sample Name :Melissa sample  
 Sample ID :4185  
 Injection Volume :1.00

R.TimeName PeakReport TIC Area%  
 10.1521-ISOPROPYL-3-METHYLCYCLOPENTAN 0.026  
 16.640Hept-5-en-2-one<6-methyl-> 1.022

16.9481-Pentene,5-(2,2-dimethylcyclopropyl)-2-met 0.055  
 17.632Octanal[RT27.794,AI998] 0.064  
 19.4097-Octen-2-ol,2-methyl-6-methylene- 0.119  
 19.5267-Octen-2-ol,2,6-dimethyl- 0.116  
 19.934Ocimene<Z-beta> 0.134  
 20.630Ocimene<E-beta> 0.100  
 20.790Cyclohexane,1,1,3,5-tetramethyl-,cis- 0.082  
 20.983Bergamal[RT31.760,AI1051] 0.450  
 22.2244-Nonanone@33.280 0.043  
 23.929Furan,3-methyl-2-(3-methyl-2-butenyl)- 0.038  
 24.192Linalool[RT35.67,AI1096] 1.059  
 24.469Isocitral<trans> 0.131  
 24.897Roseoxide cis [RT36.31,AI1106] 0.117  
 26.056Roseoxide <trans>[RT37.577,AI122] 0.045  
 26.2126-Octen-1-ol,3,7-dimethyl- 0.280  
 26.899Pulegone[RT46.348,AI1237] 0.123  
 27.409Isopulegol<neiso>[RT41.170,AI1167] 0.962  
 27.643trans-Chrysanthamal[RT39.450,AI1153] 0.215  
 28.054Citronellal[RT39.694,AI1148] 28.134  
 28.232Isopulegol <iso>[RT40.328,AI1155] 0.467  
 28.633Chrysanthanol<cis>[RT40.4,AI1160] 0.207  
 29.056Isopulegol<neiso>[RT41.170,AI1167] 0.046  
 29.378Isoborneol[RT41.030,AI1155] 0.054  
 29.865Chrysanthanol<cis> 0.347  
 30.454cis-Dodec-5-enal 0.087  
 30.6424-Decenal, (Z)- 0.044  
 31.443Decanal 0.405  
 33.328Citronellol[RT45.37,AI1223] 14.200  
 34.092Neral 8.565  
 35.215Nerol[RT45.229,AI1227] 21.151  
 36.158Geranial[RT48.526,AI1267] 11.145  
 36.290Citronellylformate[RT48.773,AI1271] 0.072  
 36.754Limoneneoxide<cis>[RT38.251,RI1136] 0.159  
 38.0632,6-Octadien-1-ol,3,7-dimethyl-,formate,(E) 0.041  
 39.201Citronellicacid[RT51.400,AI1312] 0.101  
 40.3728-hydroxyneomenthol 0.179  
 41.418Citronellylacetate 1.948  
 41.860Guaiacol,3-allyl- 0.176  
 42.137Nerylacetate[RT54.927,AI1361] 0.050  
 43.391Geranylacetate[RT56.307,AI1379] 1.138  
 43.704.BETA.BOURBONENE 0.113  
 44.116Elemene<beta> 0.297  
 45.968Caryophyllene 2.786  
 48.084Humulene<alpha>[RT61.826,RI1452] 0.368  
 49.460Cadinene<gamma->[RT65.496,AI1513] 0.047  
 49.780GermacreneD 5.146  
 50.917Muurolene<alpha>[RT64.557,AI1500] 0.120  
 51.786Murrrola-4(14),5-diene<trans>[RT64.213,AI1] 0.270  
 52.302Cadinene<delta->[RT65.784,AI1523] 0.537  
 53.880Elemol[RT67.635,AI1548] 0.087  
 55.493UJuniper@69.591 0.129  
 55.805Caryophylleneoxide[RT69.954,AI1582] 0.080  
 55.952Manool [RT93.080,AI2056] 0.505  
 59.311Cadinol<delta>[RT73.756,AI1645] 0.186  
 60.026Cadinol<alpha>[RT74.309,AI1652] 0.191  
 79.9552,6-Octadienal,3,7-dimethyl-,(Z)- 0.064  
 82.572Farnesol<(2Z,6Z)> [RT77.556,AI1698] 0.064  
 109.072THIOGERANIOL 0.118  
 100.000

ChromatogramMelissasampleof BIORUŽA s.r.o.



Comments:

Typical Ranges of Main Components: